



TRANSITIONAL (BASE MODEL FAÇADE)



Metzler
HOME BUILDERS



PARKSIDE
— at —
LAMPETER

STARTING AT

\$569,000

PRICE SUBJECT TO CHANGE

BUILDING FOR GENERATIONS

ABOUT THE HOME

This two-story residence, distinguished by a first-floor office, thoughtfully designed semi-open floor plan, and a spacious mudroom, is comprised of four bedrooms and a central loft. It includes a two-car garage, further enhancing its practical and refined amenities.

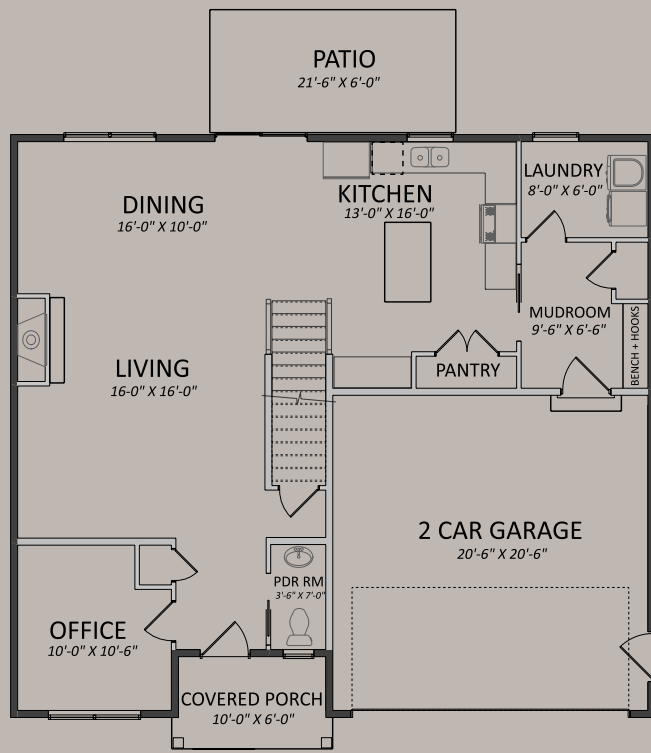
the
ELM



2,350 SQFT



4 BED
2.5 BATH



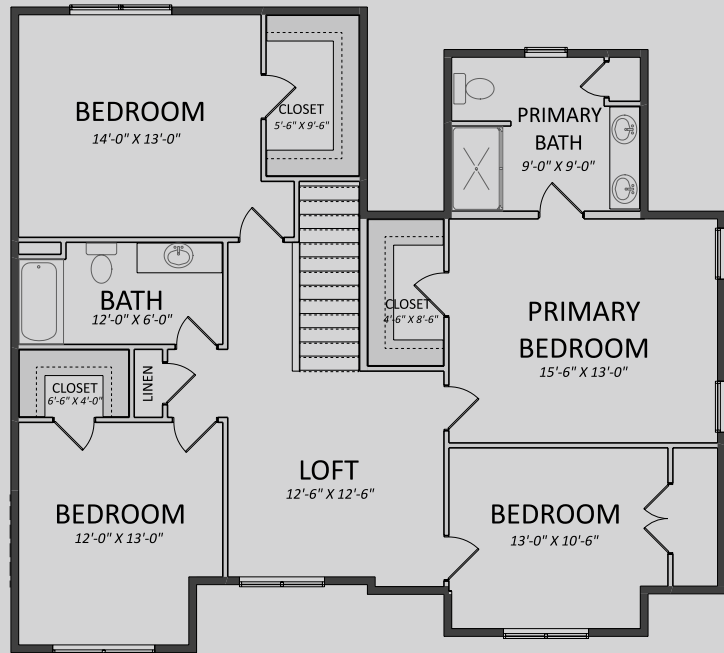
FIRST FLOOR PLAN
1,115 sqft.

STANDARD FEATURES

- 9ft. Precast Superior Walls in Basement
- 9ft. Ceilings on First Floor
- 8ft. Ceilings on Second Floor
- Covered Front Porch
- Double Hung Vinyl Windows
- Natural Gas Fireplace and Custom Surround
- Natural Gas Furnace and Air Conditioning
- Semi-Custom Cabinetry
- Quartz Countertops in Kitchen
- Tile Backsplash in Kitchen
- Large Pantry and Large Island in Kitchen
- Enhanced Trim Package
- Bench and Hooks in Mud Room
- Vinyl Plank Flooring in Living Areas
- Vinyl Flooring in Bathrooms
- Carpet in Bedrooms
- Stainless Steel Appliance Package
- Refined Front Door
- 2 Car Garage with Large 18ft. Garage Door
- Rear Concrete Patio

COMMUNITY FEATURES

- *Countryside Setting*
- *Adjacent to Village Park with Additional Walking Paths*
- *Neighboring the YMCA*
- *Lampeter Strasburg School District*
- *HOA including Open Space and Stormwater Management*
- *Multiple Architectual Styles Available*
- *Multiple Materials and Colors Available*



SECOND FLOOR PLAN
1,235 sqft.

TO INQUIRE , CONTACT ROB HESS AT



(c) 717.314.9000

(o) 717.569.8701

ROB@KINGSWAYREALTY.COM



Check out more available homes and lots by scanning here.



CRAFTSMAN

presented in
Exterior Color Option #2



FARMHOUSE

presented in
Exterior Color Option #8



CONTEMPORARY

presented in
Exterior Color Option #7



the ELM
architectural façade upgrades