



**TRANSITIONAL** (BASE MODEL FAÇADE)



**Metzler**  
HOME BUILDERS



**PARKSIDE**  
— at —  
LAMPETER

STARTING AT

**\$551,000**

PRICE SUBJECT TO CHANGE

BUILDING FOR GENERATIONS

**ABOUT THE HOME**

*This charming story-and-a-half home hosts a main floor bedroom suite, discreet private office nook, and a well-conceived open floor plan for the living space. The second floor enhances the residence with two supplementary bedrooms and a loft space, culminating in a humble yet sophisticated home.*

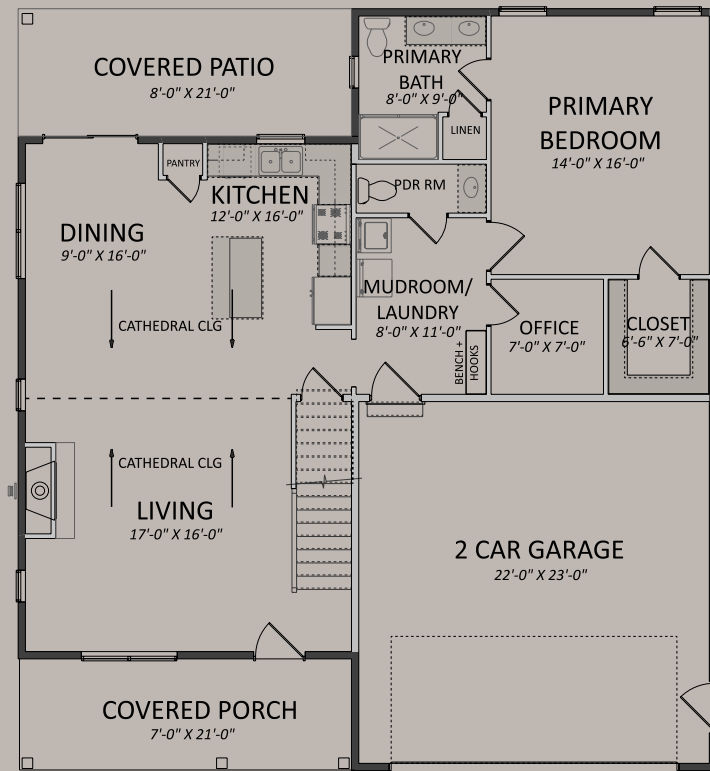
**the**  
**WILLOW**



1,880 SQFT



3 BED  
2.5 BATH



## FIRST FLOOR PLAN

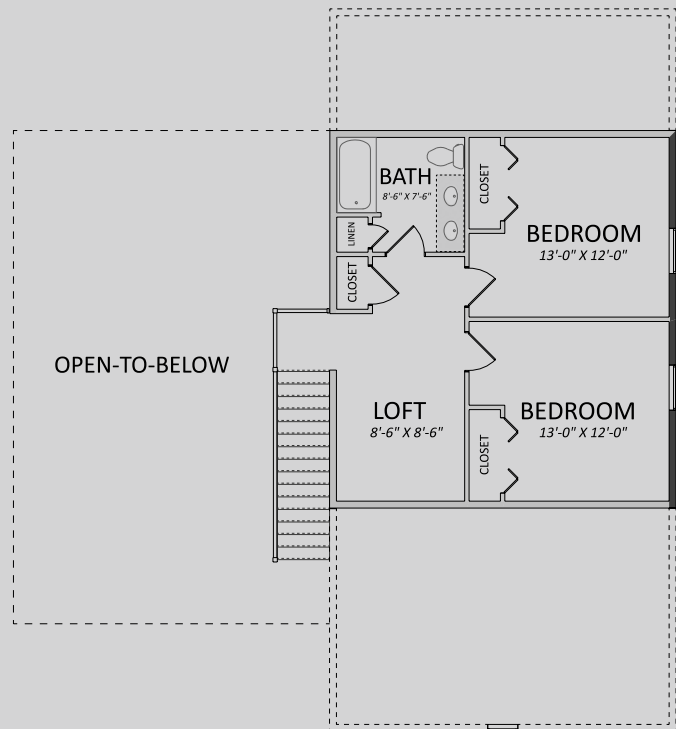
1,280 sqft.

## STANDARD FEATURES

- 9ft. Precast Superior Walls in Basement
- 9ft. Ceilings on First Floor
- 8ft. Ceilings on Second Floor
- Covered Front Porch
- Double Hung Vinyl Windows
- Natural Gas Fireplace and Custom Surround
- Natural Gas Furnace and Air Conditioning
- Semi-Custom Cabinetry
- Quartz Countertops in Kitchen
- Tile Backsplash in Kitchen
- Large Pantry and Large Island in Kitchen
- Enhanced Trim Package
- Bench and Hooks in Mud Room
- Vinyl Plank Flooring in Living Areas
- Vinyl Flooring in Bathrooms
- Carpet in Bedrooms
- Stainless Steel Appliance Package
- Refined Front Door
- 2 Car Garage with Large 18ft. Garage Door
- Rear Concrete Patio

## COMMUNITY FEATURES

- *Countryside Setting*
- *Adjacent to Village Park with Additional Walking Paths*
- *Neighboring the YMCA*
- *Lampeter Strasburg School District*
- *HOA including Open Space and Stormwater Management*
- *Multiple Architectual Styles Available*
- *Multiple Materials and Colors Available*



## SECOND FLOOR PLAN

600 sqft.



Check out more available homes and lots by scanning here.

TO INQUIRE , CONTACT ROB HESS AT



(c) 717.314.9000

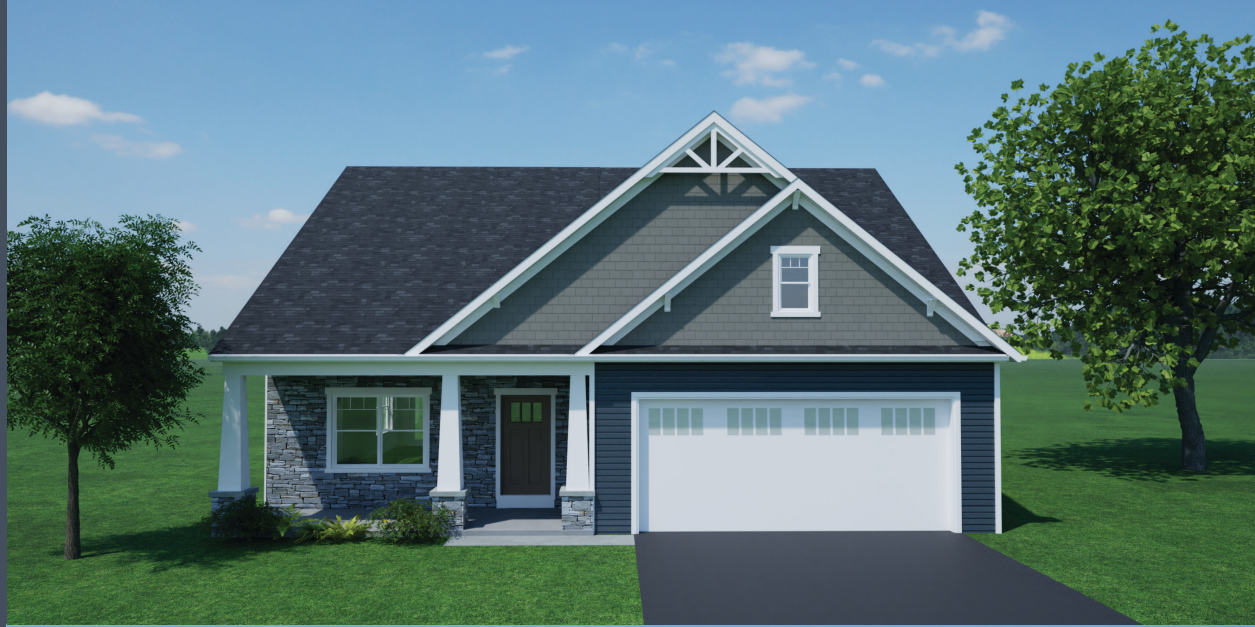
(o) 717.569.8701

ROB@KINGSWAYREALTY.COM



# CRAFTSMAN

*presented in*  
*Exterior Color Option #2*



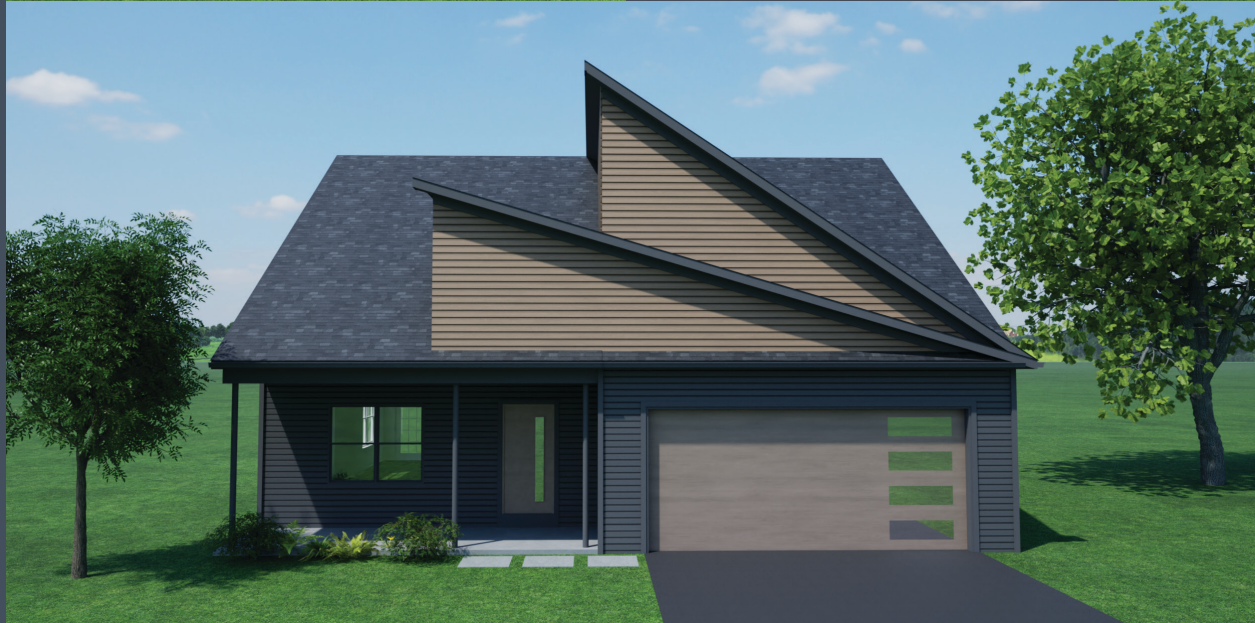
# FARMHOUSE

*presented in*  
*Exterior Color Option #7*



# CONTEMPORARY

*presented in*  
*Exterior Color Option #9*



**the WILLOW**  
*architectural façade upgrades*