



TRANSITIONAL (BASE MODEL FAÇADE)



Metzler
HOME BUILDERS



PARKSIDE
— at —
LAMPETER

STARTING AT

\$560,000

PRICE SUBJECT TO CHANGE

BUILDING FOR GENERATIONS

ABOUT THE HOME

This two-story home features a semi-open floor plan and two-car garage. With a large mudroom, three bedrooms, and laundry on the second floor, this home is perfect for a growing family.

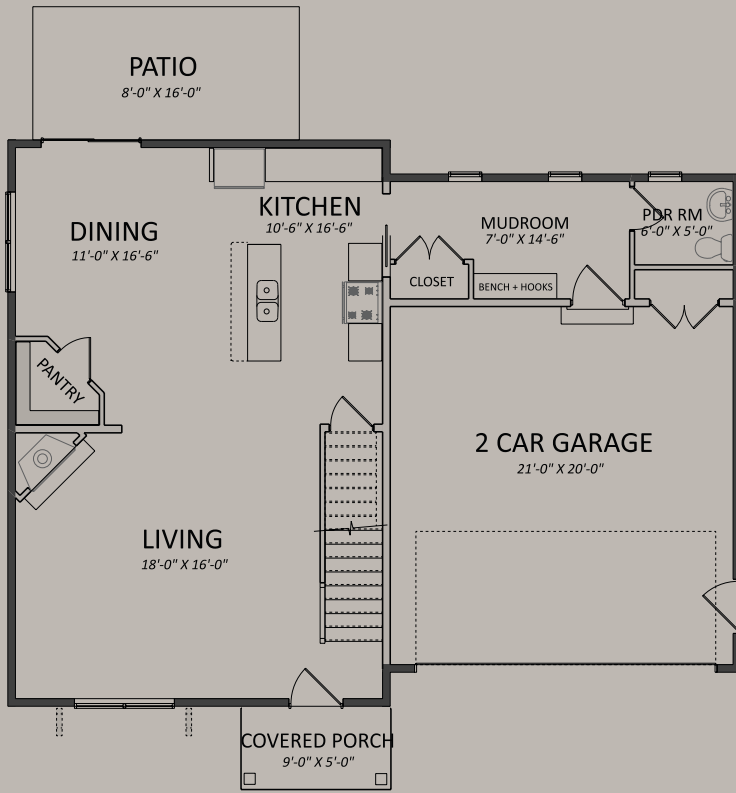
the
ASH



2,005 SQFT



3 BED
2.5 BATH



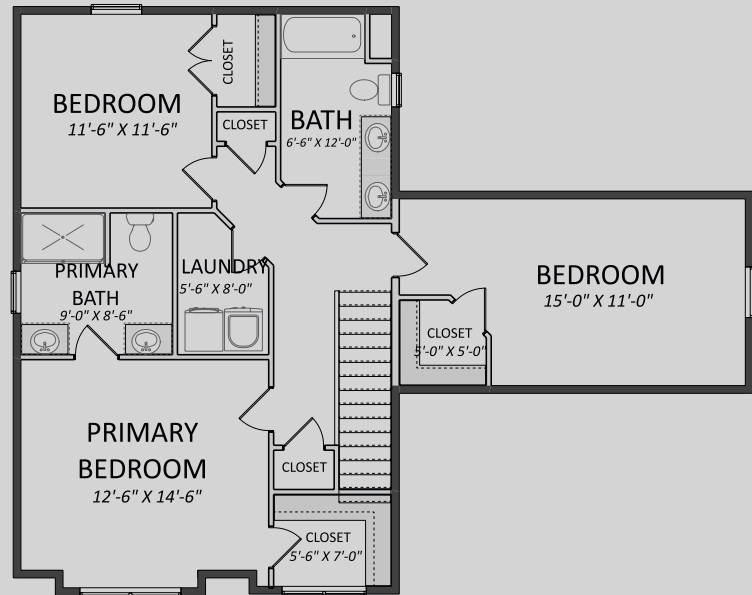
FIRST FLOOR PLAN
955 sqft.

STANDARD FEATURES

- 9ft. Precast Superior Walls in Basement
- 9ft. Ceilings on First Floor
- 8ft. Ceilings on Second Floor
- Covered Front Porch
- Double Hung Vinyl Windows
- Natural Gas Fireplace and Custom Surround
- Natural Gas Furnace and Air Conditioning
- Semi-Custom Cabinetry
- Quartz Countertops in Kitchen
- Tile Backsplash in Kitchen
- Large Pantry and Large Island in Kitchen
- Enhanced Trim Package
- Bench and Hooks in Mud Room
- Vinyl Plank Flooring in Living Areas
- Vinyl Flooring in Bathrooms
- Carpet in Bedrooms
- Stainless Steel Appliance Package
- Refined Front Door
- 2-Car Garage with Large 18ft. Garage Door
- Rear Concrete Patio

COMMUNITY FEATURES

- *Countryside Setting*
- *Adjacent to Village Park with Additional Walking Paths*
- *Neighboring the YMCA*
- *Lampeter-Strasburg School District*
- *HOA including Open Space and Stormwater Management*
- *Multiple Architectural Styles Available*
- *Multiple Materials and Colors Available*



SECOND FLOOR PLAN
1,050 sqft.

TO INQUIRE , CONTACT ROB HESS AT



(c) 717.314.9000

(o) 717.569.8701

ROB@KINGSWAYREALTY.COM



Check out more available homes and lots by scanning here.



CRAFTSMAN

presented in
Exterior Color Option #3



FARMHOUSE

presented in
Exterior Color Option #1



CONTEMPORARY

presented in
Exterior Color Option #9



the ASH
architectural façade upgrades