



**TRANSITIONAL** (BASE MODEL FAÇADE)



**Metzler**  
HOME BUILDERS



**PARKSIDE**  
— at —  
LAMPETER

STARTING AT

**\$628,000**

PRICE SUBJECT TO CHANGE

BUILDING FOR GENERATIONS

**ABOUT THE HOME**

*This home showcases a dual-bedroom suite arrangement, strategically situated on each floor for enhanced privacy and convenience. The inclusion of a first-floor office, thoughtfully designed semi-open floor plan, and an additional three bedrooms collectively provide an enriched multigenerational living experience.*

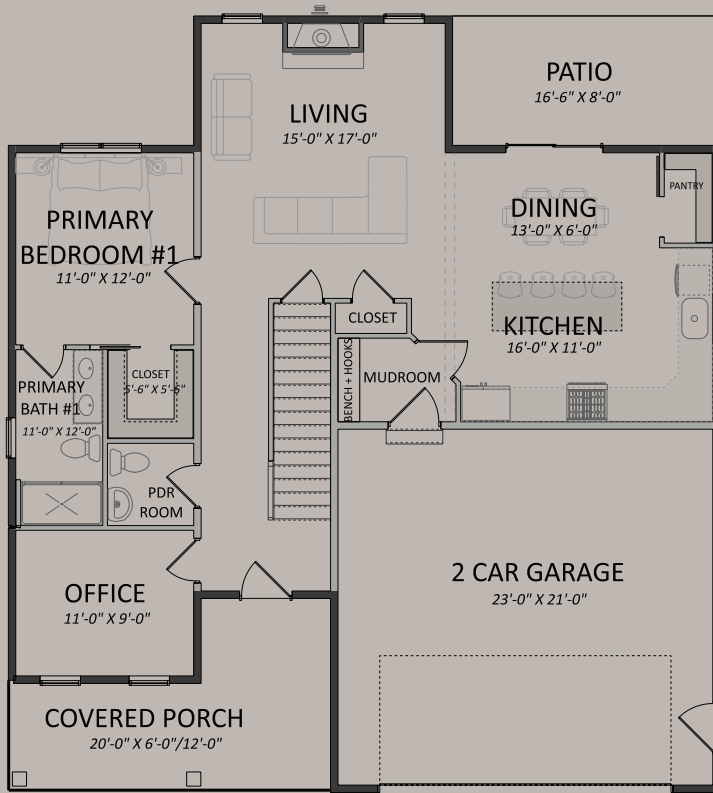
**the**  
**MAPLE**



2,650 SQFT



5 BED  
3.5 BATH



## FIRST FLOOR PLAN

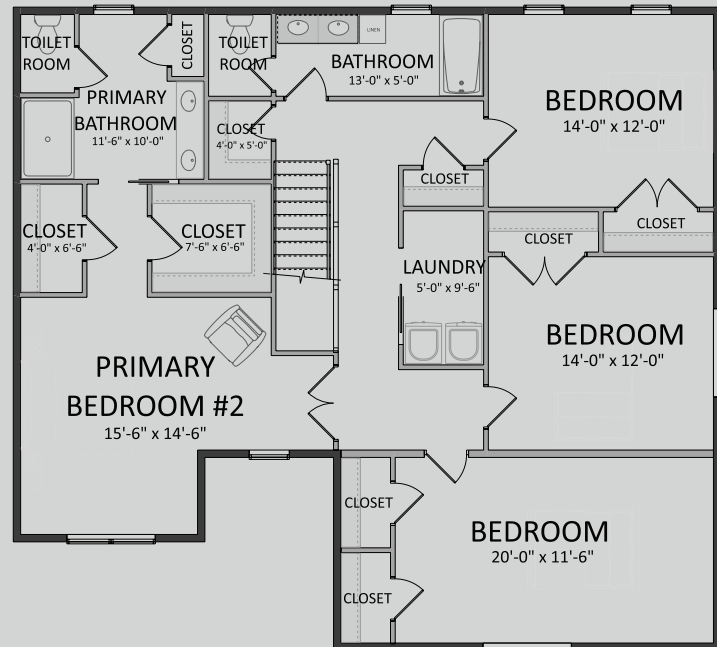
1,200 sqft.

## STANDARD FEATURES

- 9ft. Precast Superior Walls in Basement
- 9ft. Ceilings on First Floor
- 8ft. Ceilings on Second Floor
- Covered Front Porch
- Double Hung Vinyl Windows
- Natural Gas Fireplace and Custom Surround
- Natural Gas Furnace and Air Conditioning
- Semi-Custom Cabinetry
- Quartz Countertops in Kitchen
- Tile Backsplash in Kitchen
- Large Pantry and Large Island in Kitchen
- Enhanced Trim Package
- Bench and Hooks in Mud Room
- Vinyl Plank Flooring in Living Areas
- Vinyl Flooring in Bathrooms
- Carpet in Bedrooms
- Stainless Steel Appliance Package
- Refined Front Door
- 2-Car Garage with Large 18ft. Garage Door
- Rear Concrete Patio

## COMMUNITY FEATURES

- *Countryside Setting*
- *Adjacent to Village Park with Additional Walking Paths*
- *Neighboring the YMCA*
- *Lampeter-Strasburg School District*
- *HOA including Open Space and Stormwater Management*
- *Multiple Architectural Styles Available*
- *Multiple Materials and Colors Available*



## SECOND FLOOR PLAN

1,550 sqft.

TO INQUIRE , CONTACT ROB HESS AT



(c) 717.314.9000

(o) 717.569.8701

ROB@KINGSWAYREALTY.COM



Check out more available homes and lots by scanning here.



# CRAFTSMAN

*presented in*  
**Exterior Color Option #8**



# FARMHOUSE

*presented in*  
**Exterior Color Option #3**



# CONTEMPORARY

*presented in*  
**Exterior Color Option #9**



**the MAPLE**  
*architectural façade upgrades*