



(BASE MODEL FAÇADE)

TRANSITIONAL



Metzler
HOME BUILDERS



PARKSIDE
— at —
LAMPETER

STARTING AT

\$599,000

PRICE SUBJECT TO CHANGE

BUILDING FOR GENERATIONS

ABOUT THE HOME

This home features an open floor plan, inclusive of a main-level bedroom suite and a two-car garage. The expansive living space seamlessly transitions to the second floor, where three bedrooms and a shared bathroom contribute to a harmonious family living experience.

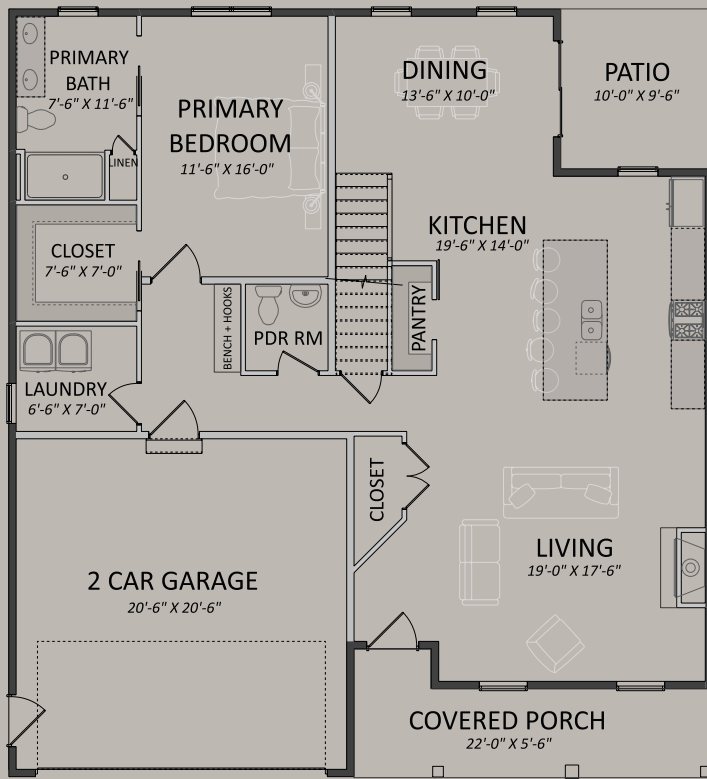
the
SYCAMORE



2,400 SQFT



4 BED
2.5 BATH



FIRST FLOOR PLAN

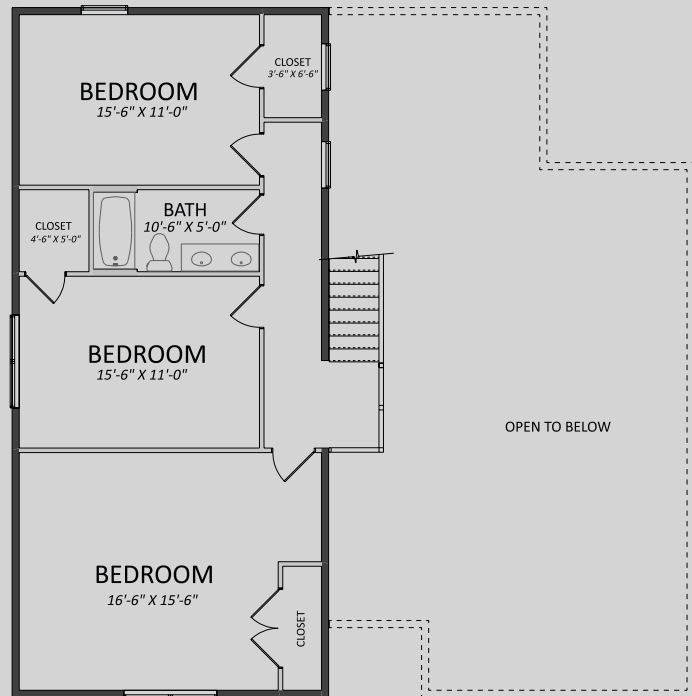
1,460 sqft.

STANDARD FEATURES

- 9ft. Precast Superior Walls in Basement
- 9ft. Ceilings on First Floor
- 8ft. Ceilings on Second Floor
- Covered Front Porch
- Double Hung Vinyl Windows
- Natural Gas Fireplace and Custom Surround
- Natural Gas Furnace and Air Conditioning
- Semi-Custom Cabinetry
- Quartz Countertops in Kitchen
- Tile Backsplash in Kitchen
- Large Pantry and Large Island in Kitchen
- Enhanced Trim Package
- Bench and Hooks in Mud Room
- Vinyl Plank Flooring in Living Areas
- Vinyl Flooring in Bathrooms
- Carpet in Bedrooms
- Stainless Steel Appliance Package
- Refined Front Door
- 2-Car Garage with Large 18ft. Garage Door
- Rear Concrete Patio

COMMUNITY FEATURES

- *Countryside Setting*
- *Adjacent to Village Park with Additional Walking Paths*
- *Neighboring the YMCA*
- *Lampeter-Strasburg School District*
- *HOA including Open Space and Stormwater Management*
- *Multiple Architectural Styles Available*
- *Multiple Materials and Colors Available*



SECOND FLOOR PLAN

940 sqft.

TO INQUIRE , CONTACT ROB HESS AT



(c) 717.314.9000

(o) 717.569.8701

ROB@KINGSWAYREALTY.COM



Check out more available homes and lots by scanning here.



CRAFTSMAN

presented in
Exterior Color Option #4



FARMHOUSE

presented in
Exterior Color Option #3



CONTEMPORARY

presented in
Exterior Color Option #10



the **SYCAMORE**
architectural façade upgrades