



TRANSITIONAL (BASE MODEL FAÇADE)



Metzler
HOME BUILDERS



PARKSIDE
— at —
LAMPETER

STARTING AT

\$611,000

PRICE SUBJECT TO CHANGE

BUILDING FOR GENERATIONS


ABOUT THE HOME

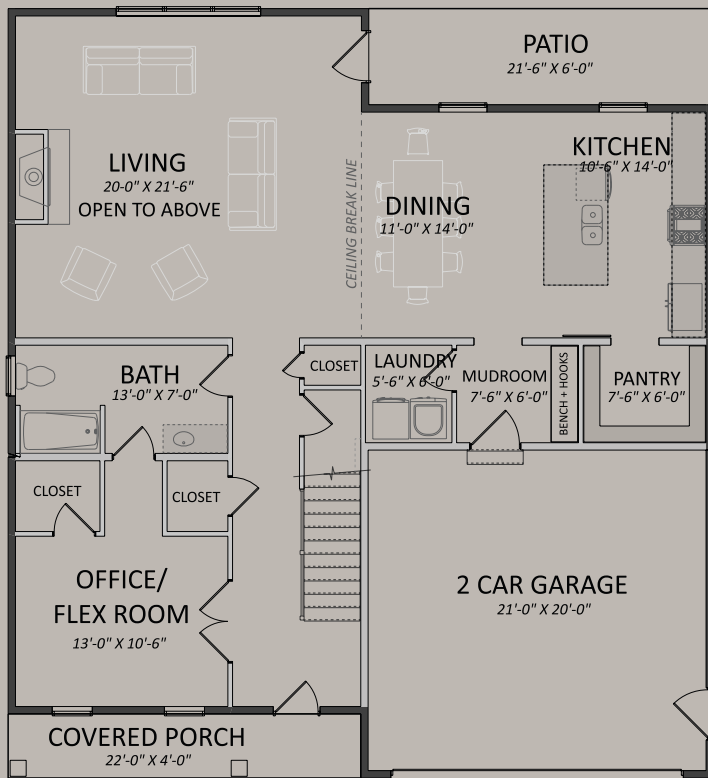
This residence presents an expansive open floor plan seamlessly integrating spacious living and dining areas, complemented by a generously sized pantry. The inclusion of a dedicated first-floor office, a full bathroom, and a two-car garage enhances both functionality and convenience.

Ascending to the second floor, three spacious bedrooms await, accompanied with an overlook of the first-floor living space.

the
OAK

 ²
2,880 SQFT

 4 BED
3 BATH



FIRST FLOOR PLAN

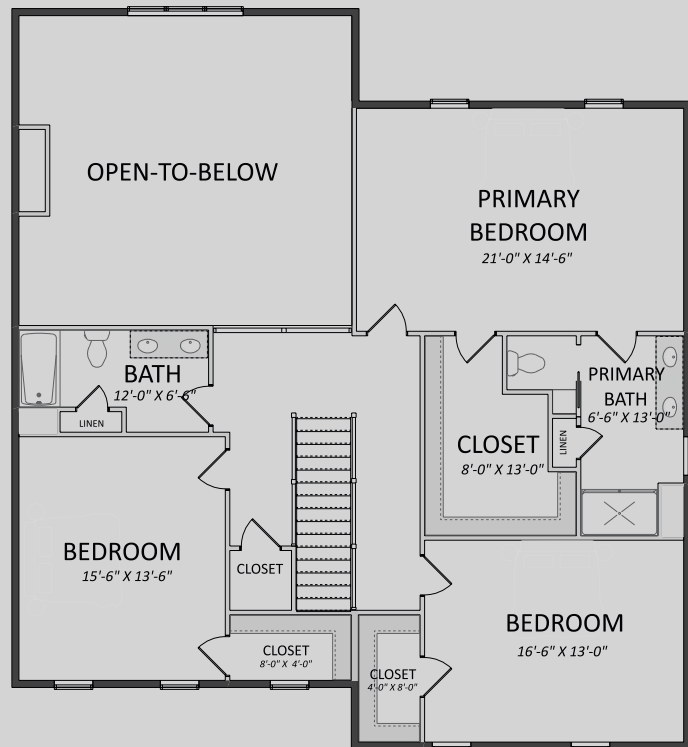
1,470 sqft.

STANDARD FEATURES

- 9ft. Precast Superior Walls in Basement
- 9ft. Ceilings on First Floor
- 8ft. Ceilings on Second Floor
- Covered Front Porch
- Double Hung Vinyl Windows
- Natural Gas Fireplace and Custom Surround
- Natural Gas Furnace and Air Conditioning
- Semi-Custom Cabinetry
- Quartz Countertops in Kitchen
- Tile Backsplash in Kitchen
- Large Pantry and Large Island in Kitchen
- Enhanced Trim Package
- Bench and Hooks in Mud Room
- Vinyl Plank Flooring in Living Areas
- Vinyl Flooring in Bathrooms
- Carpet in Bedrooms
- Stainless Steel Appliance Package
- Refined Front Door
- 2-Car Garage with Large 18ft. Garage Door
- Rear Concrete Patio

COMMUNITY FEATURES

- *Countryside Setting*
- *Adjacent to Village Park with Additional Walking Paths*
- *Neighboring the YMCA*
- *Lampeter-Strasburg School District*
- *HOA including Open Space and Stormwater Management*
- *Multiple Architectual Styles Available*
- *Multiple Materials and Colors Available*



SECOND FLOOR PLAN

1,410 sqft.

TO INQUIRE , CONTACT ROB HESS AT



(c) 717.314.9000

(o) 717.569.8701

ROB@KINGSWAYREALTY.COM

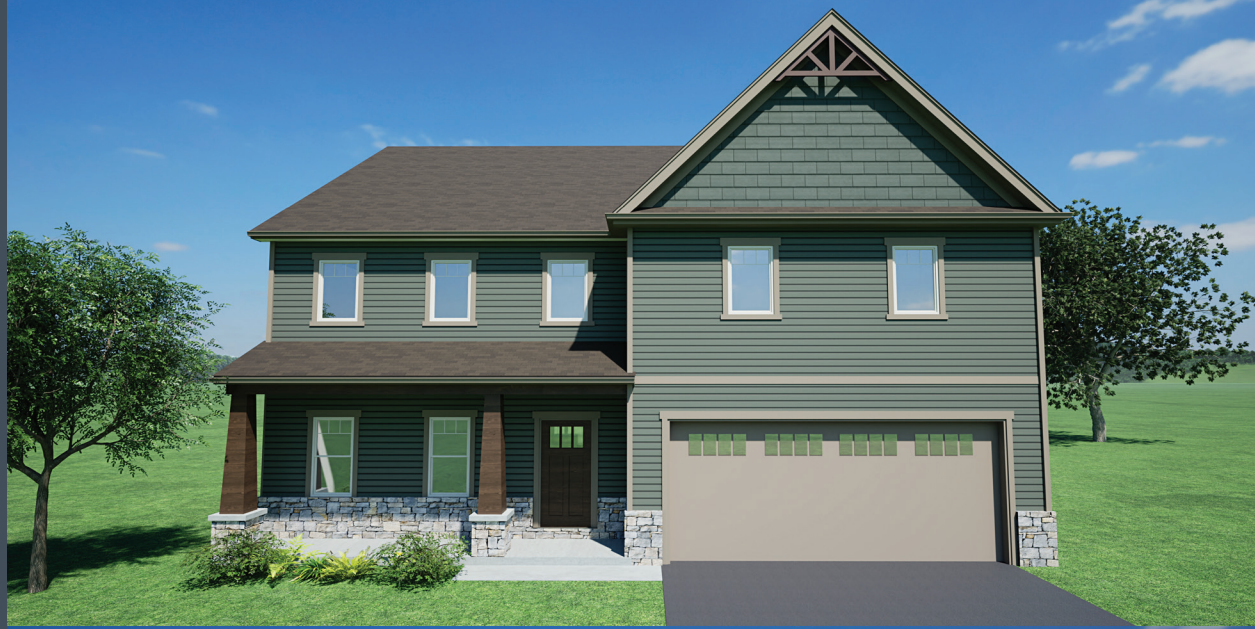


Check out more available homes and lots by scanning here.



CRAFTSMAN

*presented in
Exterior Color Option #4*



FARMHOUSE

*presented in
Exterior Color Option #2*



CONTEMPORARY

*presented in
Exterior Color Option #10*

